



© Frank Behrends

## M/V A. OBELIX    M/V ATOUT

**BUILT:** 2008-2010

**CLASS:** LR

**FLAG:** LIBERIA, MALTA



**BUILDER:** Wadan Yards. Wismar, Germany

### VESSEL PARTICULARS

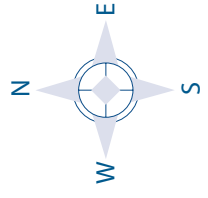
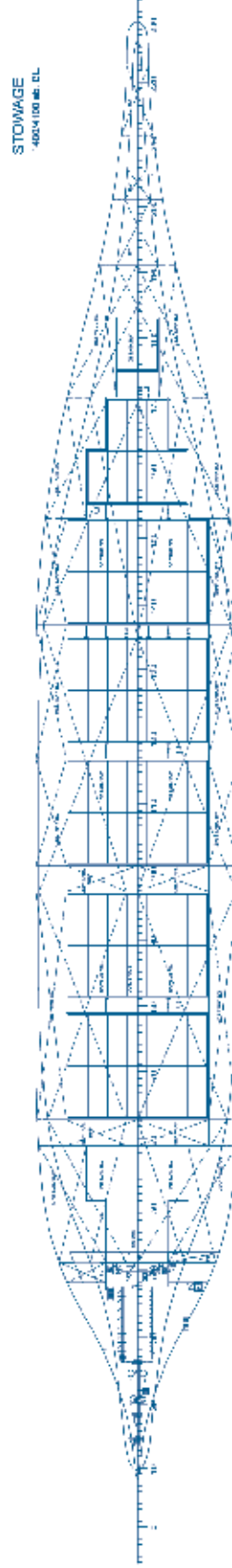
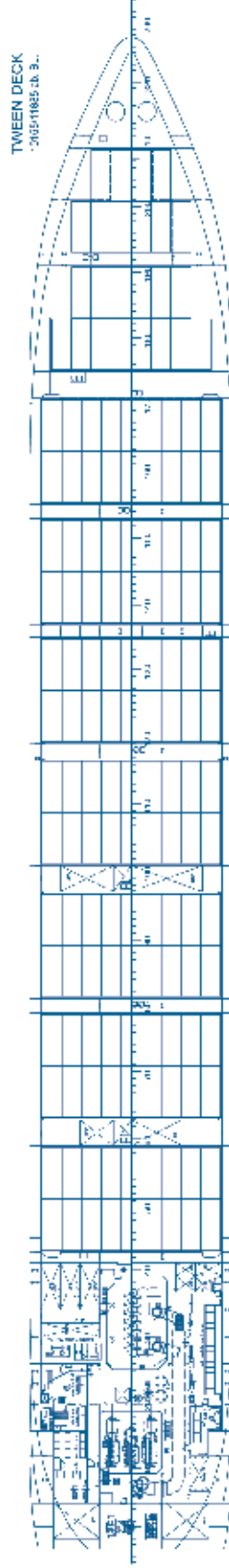
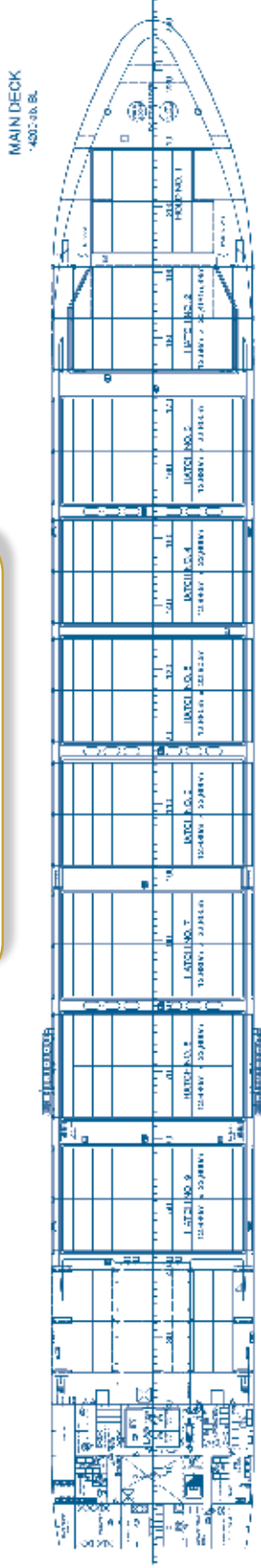
Type of vessel:	GEARLESS/ CELLULAR/ CONTAINER VESSEL
Length, overall:	182.52 m
Length, between pp:	173.54 m
Breadth, moulded:	25.20 m
Depth Moulded	14.20 m
Draught, design (Td):	9.50 m
Draught, scantling (Ts):	10.00 m
Air Draft:	48.00 m
Deadweight, design (Td):	21,846 mt
Deadweight, scantling (Ts):	23,791 mt
International NT	8,666
International GT	18,199

### CONTAINER CAPACITY

Nominal capacity	
On Deck	1,046 TEU (max 7 tiers)
In Holds:	<u>656 TEU (5 tiers)</u>
Total	<u>1,702 TEU</u>
Homog. intake @ 14 mt	1,240 TEU
Reefer Plugs on Deck	200
Reefer Plugs in Holds	<u>130</u>
Reefer Plugs Total	<u>330</u>

### PROPULSION

Main engine:	One (1) Set MAN 7 S60 MC-C Mk8
MCR	16,660 Kw @ 105.0 rpm
NCR	15,020 Kw @ 101.0 rpm
Generators:	YANMAR
	TWO (2) SETS x 8N21 AL-EV 1.300 Kw EACH
	ONE (1) SET x 6N21 AL-SV 880 Kw
Emergency Generator:	ONE (1) SET 176 Kw
	ALL DETAILS ABOUT



**M/V A. OBELIX    M/V ATOUT**  
**CAPITAL-EXECUTIVE SHIP MANAGEMENT CORP.**  
 3, Iassonos St., Piraeus 185 37, GREECE  
 Tel: +30 210 4558600, Fax: +30 210 4558655  
 e-mail: [info@capital-executive.gr](mailto:info@capital-executive.gr) - [www.capital-executive.gr](http://www.capital-executive.gr)