



**SPIRIT OF AUCKLAND    SPIRIT OF MELBOURNE  
SPIRIT OF SINGAPORE    SPIRIT OF SYDNEY**

**BUILT: 2007**

**CLASS: DNV**

**FLAG: ISLE OF MAN**



**BUILDER: Daewoo (DSME), Okpo, S. Korea**

**VESSEL MAIN PARTICULARS**

Type of vessel:	100 A5 E Container ship BWM SOLAS-II-2, Reg.19 ERS IW MC E AUT EP-D RCP (610/75)
Length, overall:	254.00 m
Length, between pp:	242.00 m
Breadth, moulded:	32.20 m
Depth, to main deck:	19.30 m
Draught, design (Td):	10.80 m
Draught, scantling (Ts):	12.40 m
Air Draft:	56.97 m
Deadweight, design (Td):	41,916 mt
Deadweight, scantling (Ts):	53,093 mt
International NT:	23,894 mt
International GT:	41,483 mt

**CONTAINER CAPACITY**

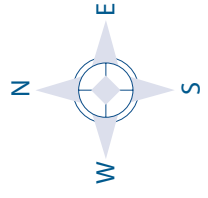
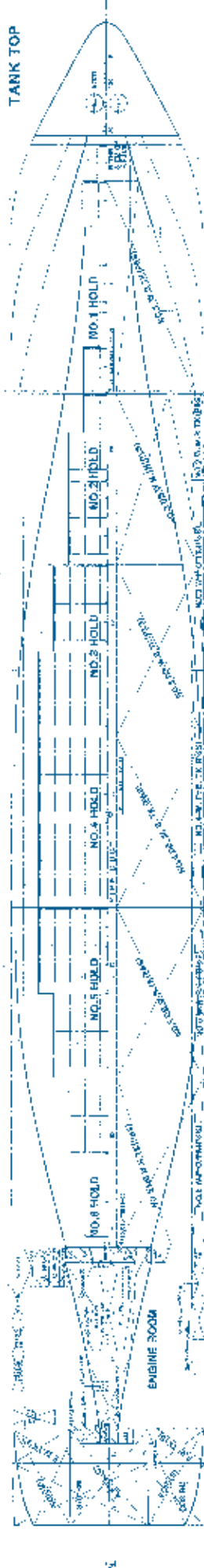
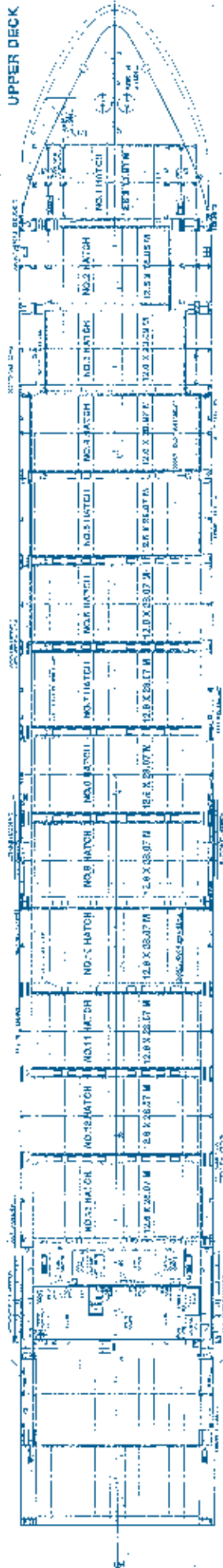
Nominal capacity	
On Deck:	2,160 TEU
In Holds:	1,592 TEU (max 6 tiers)
Total:	<u>3,752 TEU</u>
Homog. intake @ 14 mt	2,794 TEU
Reefer Plugs on Deck	550
Reefer Plugs in Hold	<u>294</u>
Reefer Plugs Total	<u>844</u>

**PROPULSION**

Main Engine	1 set MAN B&W - 8S70MC-C (Mk 8)
MCR	26,160 KW @ 91.0 rpm
NCR	22,236 KW @ 86.2 rpm

# CAPITAL EXECUTIVE

Ship Management Corp.



## SPIRIT OF AUCKLAND SPIRIT OF MELBOURNE SPIRIT OF SINGAPORE SPIRIT OF SYDNEY

CAPITAL-EXECUTIVE SHIP MANAGEMENT CORP.  
3, Iassonos St, Piraeus 185 37, GREECE  
Tel: +30 210 4558600, Fax: +30 210 4558655  
e-mail: info@capital-executive.gr - www.capital-executive.gr