



**M/V HYUNDAI PARAMOUNT M/V HYUNDAI PRIVILEGE  
M/V HYUNDAI PREMIUM M/V HYUNDAI PRESTIGE M/V HYUNDAI PLATINUM**

**BUILT: 2013**

**CLASS: LRS**

**FLAG: LIBERIA**



**BUILDER: Hyundai Heavy Industries, Gunsan, S.Korea**

**VESSEL PARTICULARS**

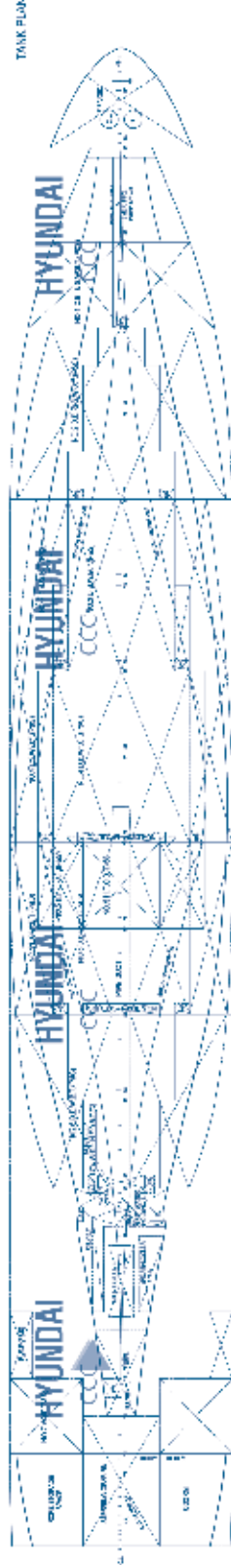
Type of vessel:	+100A1 Container Ship, ShipRight (SDA, FDA plus, CM, ACS(B)), CCSA, *IWS, LI, EcoRight (A, GW, IHM, P)+LMC, UMS, NAV1-IBS, CG Green Passport, Part Higher Tensile Steel, ShipRight(BWMP(S), SERS, SCM, MPMS, HPMS)
Length, overall:	255.49 m
Length, between pp:	242.00 m
Breadth, moulded:	37.40 m
Depth, to main deck:	22.10 m
Draught, design (Td):	12.00 m
Draught, scantling (Ts):	13.52 m
Air Draft:	57.00 m, distance from keel to highest mast (tilted)
Deadweight, design (Td):	50,935 MT
Deadweight, scantling (Ts):	63,010 MT
International NT	29,745
International GT	52,467

**CONTAINER CAPACITY**

Nominal capacity	
On Deck:	3,041 TEU (max 9 tiers)
In Holds:	<u>1,982 TEU (8 tiers)</u>
Total	<u>5,023 TEU</u>
Homog. intake @ 14 mt	abt. 3,650 TEU
Reefer Plugs on Deck	570
Reefer Plugs in Holds	<u>200</u>
Reefer Plugs Total	<u>770</u>

**PROPULSION**

Main engine:	Hyundai-Wartsila with low load tuning 6RT-flex82T
MCR	27,120 kW @ 80.0 rpm
NCR	24,408 kW @ 77.2 rpm
	ALL DETAILS ABOUT



**M/V HYUNDAI PARAMOUNT M/V HYUNDAI PRIVILEGE  
M/V HYUNDAI PREMIUM M/V HYUNDAI PRESTIGE M/V HYUNDAI PLATINUM**

CAPITAL-EXECUTIVE SHIP MANAGEMENT CORP.

3, Iassonos St., Piraeus 185 37, GREECE

Tel: +30 210 4558600, Fax: +30 210 4558655

e-mail: [info@capital-executive.gr](mailto:info@capital-executive.gr) - [www.capital-executive.gr](http://www.capital-executive.gr)

