



M/V ATHENIAN M/V ATHOS M/V ARISTOMENIS

BUILT: 2010/2011

CLASS: ABS

FLAG: LIBERIA



BUILDER: Samsung Heavy Industries, Korea

VESSEL MAIN PARTICULARS

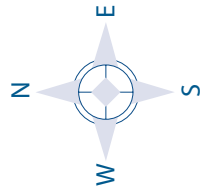
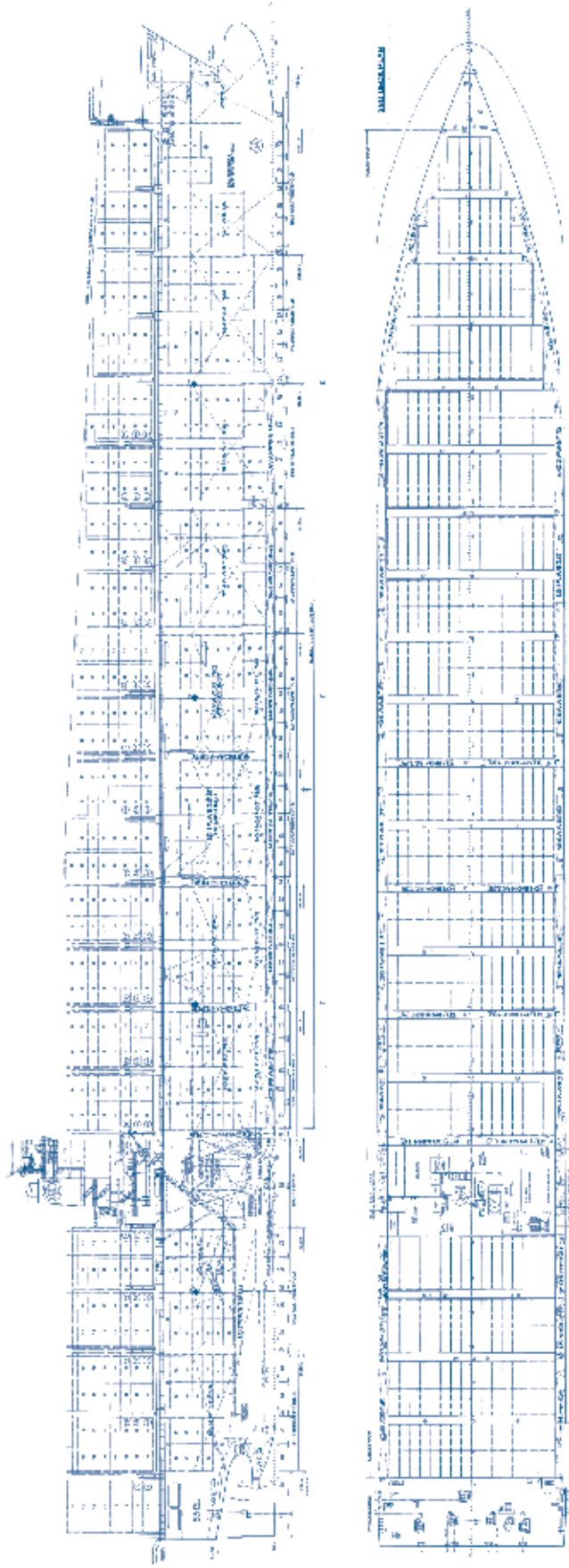
Type of vessel:	Gearless / Cellular Container Vessel ABS A1, Container Carrier, AMS, ACCU, BWE, UWILD, CRC(I), TCM, HVSC, ENVIRO KR, PMP, NBL
Length over all:	349.64 m
Length, between pp:	334.00 m
Breadth moulded:	45.60 m
Depth, to main deck:	27.20 m
Draught, design (Td):	13.00 m
Draught, scantling (Ts):	15.024 m
Air Draft:	62.00 m
Deadweight, design (Td):	91,787 mt
DW at scantling load draft:	118,888 MT
International NT:	58,731
International GT:	113,412

CONTAINER CAPACITY

Nominal capacity	
On Deck:	5,082 TEU (max 9 tiers)
In Holds:	4,872 TEU (max 10 tiers)
Total	9,954 TEU
Homog. intake @ 14 mt	7,702
Reefer Plugs on Deck	800
Reefer Plugs Total	800

PROPULSION

Main Engine:	1 set Wartsila 12RT-Flex96C-B
MCR	93,360 BHP @ 102.0 rpm
NCR	84,024 BHP @ 98.5 rpm
	ALL DETAILS ABOUT AND WOG



M/V ATHENIAN M/V ATHOS M/V ARISTOMENIS

CAPITAL-EXECUTIVE SHIP MANAGEMENT CORP.

3, Iassonos St., Piraeus 185 37, GREECE

Tel: +30 210 4558600, Fax: +30 210 4558655

e-mail: info@capital-executive.gr - www.capital-executive.gr